

Monolithic crystal filter

MQF21.4-1500/21



Application

- 2 pol filter
- i.f.- filter
- use in mobile and stationary transceivers

Limiting values

		Unit	Value
Center frequency	f_0	MHz	21.4
Insertion loss		dB	≤ 1.5
Pass band at 3.0 dB		kHz	± 7.50
Ripple in pass band	$f_0 \pm 4.00$ kHz	dB	≤ 0.5
Stop band attenuation	$f_0 \pm 25$ kHz	dB	≥ 18
	$f_0 \pm 40$ kHz	dB	> 25
Alternate attenuation	$f_0 \pm 150 \dots 500$ kHz	dB	> 40 except spurious

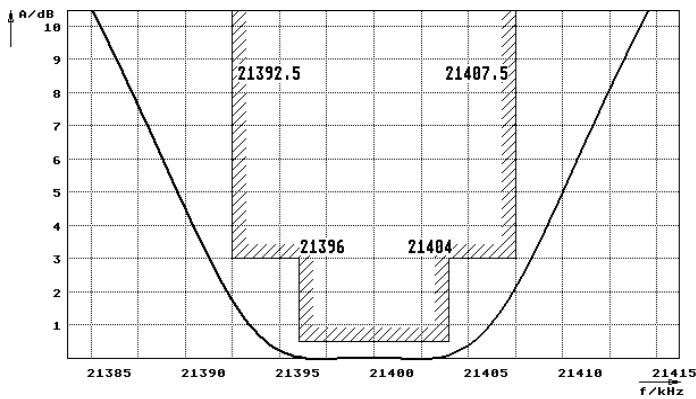
Terminating impedance Z

R1 C1	Ohm/pF	1500 2.5
R2 C2	Ohm/pF	1500 2.5

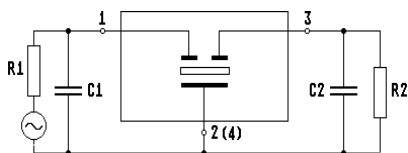
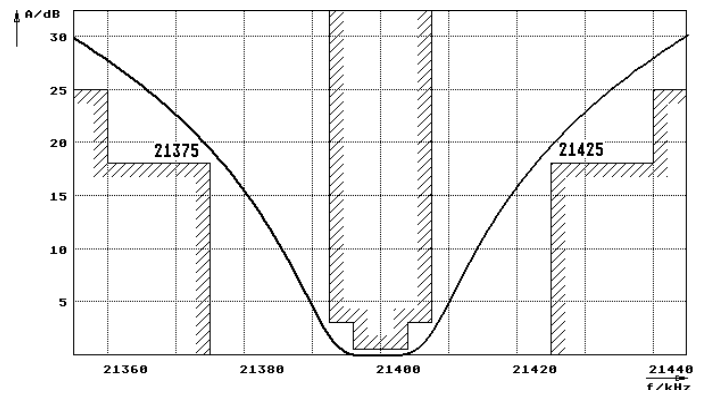
Operating temp. range	°C	-20... +70
-----------------------	----	------------

Characteristics MQF21.4-1500/21

Pass band



Stop band



Pin connections: 1 Input
2 Input-E
3 Output
4 Output-E

